

LOOK WHAT GOD IS DOING

MINISTRY EXPANSION CAMPAIGN



WOODLANDS
LUTHERAN CHURCH

Glory belongs to God, whose power is at work in us. By this power he can do infinitely more than we can ask or imagine. Glory belongs to God in the church and in Christ Jesus for all time and eternity! Amen.

Ephesians 3:20-21

FROM OUR PASTOR



Dear Woodlands Faith Family,

Greetings in the name of Jesus Christ, our Lord and Savior.

As your pastor, I can certainly say that these are some exciting times at Woodlands Lutheran Church as we continue to connect people to Jesus. Our church family has grown by leaps and bounds over the last several years, both in congregants, and in the numerous blessings God has bestowed upon us in the wonderful staff that has joined us to help coordinate God's work.



Pastor Josh Pettit

Over the past 50 years, the ministry of Woodlands has always sought to connect people to Jesus. From its humble beginnings as a church camp, to its growth as a Lutheran church and Early Learning Center (ELC), I am amazed by what God has done and continues to do. But with this growth comes the need for change. Our ELC has been operating at capacity for several years now, and the waitlist continues to grow. Through the ELC, God has brought over 25 children and parents into His family through the waters of baptism. Over the last year, more than 100 new members have joined our church, 11 of those families coming from the ELC.

“LOOK WHAT GOD IS DOING!”

In order to support and continue this growth, we are embarking on an ambitious Ministry Expansion Campaign to raise the needed funds to build an enhanced ELC capable of supporting 150 students. We will also be renovating our Disciples Hall and doing some updates around our campus to accommodate our growing congregation's need for space in order to have more activities and events.

“LOOK WHAT GOD IS DOING!” is more than a ministry campaign. It is being a part of what God has called the people of Woodlands to do, which is to connect people to Jesus. The campaign will lead us into the next phase of our mission as we expand our facilities to connect more and more people to His Word.

Please read over our campaign booklet and pray over its content. Prayerfully consider your commitment to join in the work the Lord has laid before us. My family and I are excited to serve along with you as we connect people to Jesus.

In Christ who Loves you,

*Honor the Lord with your wealth and with the firstfruits of all your produce;
then your barns will be filled with plenty, and your vats will be bursting with wine.*

(PROV. 3:9-10)

Others' Insights



Pastor Bob Roegner

Dear Woodlands Faith Family,

As one of your pastors, I pray that by God's grace and empowered by the Holy Spirit, Woodlands Lutheran Church (WLC) and Early Learning Center (ELC) will be a church and school seen as a dynamic center for Christian worship, a learning environment, and a welcoming place to connect with others with a comprehensive support system for people in our community and beyond.

We know, without any doubt, that the Lord will bless His plan for WLC and the ELC to bear fruit as we share the name of Jesus Christ with all those around us. It is indeed a huge God-sized plan; a huge God-sized goal! It's going to require everyone's spiritual commitment and personal

sacrifice of time, talent, and money to fulfill God's plan—His vision for our faith family. Achieving His goal will increase the ability of our congregation and school to reach those who do not yet know Jesus as Savior.

Together in Christ, we can live out God's dream in spreading the Gospel message throughout our neighborhoods and around the world. Let's dream on and move on, following God's perfect plan for WLC and the ELC—God's church and school and our church and school, too!

LOOK WHAT GOD IS DOING!

In His Service . . . and Yours!

Dear Woodlands Faith Family,

We were blessed in 2023 to celebrate 35 years as an LCMS congregation and 30 years serving our community with an Early Learning Center. We are also blessed to say "Look What God Has Done" in leading us to the next ministry opportunities built on the foundation of the last 35 years. Woodlands' rich and storied history, coupled with our mission "Connecting People to Jesus", leads us today to say

LOOK WHAT GOD IS DOING!

Recognizing the explosive population growth and an ELC enrollment that is growing beyond our capacity, along with an increasing demand for an alternative to the public school system, the Voters Assembly, this past November, authorized the congregation to embark on a campaign to expand the school and renovate Disciples Hall to better accommodate church functions.

As we launch into the future, we "Listen to What God is Saying" especially noting from Proverbs, "Where there is no vision, the people perish." Together, we dream big and give of our time, talent, and treasure to move from dream to vision to action in "Connecting People to Jesus".

Yours in Christ,



Clinton & Ann Lowe
Campaign Directors

CASE STATEMENT

WHO WE ARE & WHAT OUR MISSION IS, AS WE'VE DREAMED

As a people of God, Woodlands Lutheran Church is a church that “Connects People to Jesus!” We do this through worshipping, learning, and connecting. We value seeking the “Not Yet” (those who are not yet Christians), sharing God’s gifts joyfully and generously, serving Jesus through serving others, understanding that the faith of ALL generations matters, and recognizing we are one family with Jesus. We celebrate the abundant opportunities for our growing congregation that have come our way, presented by our location and the area’s rapid growth, allowing us to dream on with God and leading us to shout out, “**LOOK WHAT GOD IS DOING!**”

As we launch the **LOOK WHAT GOD IS DOING** capital campaign, we’ve centered our theme on the words of Ephesians 3:20-21, *Glory belongs to God, whose power is at work in us. By this power he can do infinitely more than we can ask or imagine. Glory belongs to God in the church and in Christ Jesus for all time and eternity! Amen.* (GWN)

A HISTORY OF BLESSINGS, AS GOD’S DREAM FOR WOODLANDS TAKES ROOT!

Woodlands Lutheran Church (WLC) is a church that was always part of God’s dream for furthering His Kingdom in the greater Clermont community. Starting from The Lutheran Church—Missouri Synod, Florida-Georgia District’s Woodlands Lutheran Camp, a church was born in 1988. From its humble beginnings 35 years ago, and then the establishment five years later of our Early Learning Center (ELC), God’s dream for Woodlands took root! Today, WLC and the ELC serves over 650 members, 110 children, and 75+ school families! **LOOK WHAT GOD IS DOING!**

THE NEED, AS GOD’S DREAM FOR WOODLANDS SENDS OUT SHOOTS!

Woodlands Lutheran Church is a church of God’s people who desire to meet the general and spiritual needs of our church family, the people of our surrounding communities, and the world by using our God-given spiritual gifts together with our time, talents, and treasures, to proclaim the Gospel, to disciple people into our family of faith, and to provide acts of mercy through community and worldwide service.

Jesus told His disciples: *It is not for you to know the times or dates the Father has set by his own authority. But you will receive power when the Holy Spirit comes on you; and you will be my witnesses in Jerusalem, and in all Judea and Samaria, and to the ends of the earth.* (Acts 1:7b-8). The mission endeavors of Woodlands Lutheran Church happen within these four “arenas” to which Jesus sends us as witnesses—Jerusalem, Judea, Samaria, and the ends of the earth. The Woodlands Early Learning Center and its future K-8 Lutheran School is our Jerusalem!

At Woodlands Lutheran Church, we’ve been blessed with our Disciples Hall since 2000. It has functioned as both a WLC and an ELC space. However, with an increasing waitlist for the ELC, we now need to add three more classrooms, along with two additional classrooms for kindergarten. Additionally, we’re considering renovating the current Disciples Hall space to better accommodate congregational activities. This prompts us to reflect on where God is leading us at this time. **LOOK WHAT GOD IS DOING!**



CASE STATEMENT *cont.*

OUR PROPOSED VISION FOR GOD'S DREAM FOR WOODLANDS TO BEAR FRUIT!

God indeed has plans to prosper Woodlands Lutheran Church—to give our church, Early Learning Center, and its people, hope and a rock-solid future! Therefore, to confidently proceed with God's plan to meet the challenges mentioned above for our congregation and our Early Learning Center, we are prayerfully proposing a three-year ministry expansion campaign to raise \$1,650,000. We need your help to accomplish this goal!

\$165,000

We will donate 10% of all firstfruits received in this ministry expansion campaign to our mission endeavors in Jerusalem, Judea, Samaria, and to the ends of the earth.

First and foremost, in gratitude for God's tremendous blessings to Woodlands Lutheran Church in the past 35 years and to Woodlands Early Learning Center in the past 30 years, we want our people to bring their firstfruits to God, the King of Kings and Lord of Lords. This is how Woodlands Lutheran Church and Early Learning Center began—with the firstfruits of others.

\$412,500

We will designate 25% of all firstfruits received in this ministry expansion campaign to Disciples Hall renovation and Sanctuary infrastructure updates.

Secondly, it is critical for Woodlands Lutheran Church to have some newly dedicated space as it grows. This dedicated space will allow for larger general gatherings as well as much-needed space for Woodlands Lutheran Church children and youth groups. This will help us celebrate that we are one family with Jesus and allow us to invest in the future! It will require the people of God at Woodlands Lutheran Church to respond generously and sacrificially to the challenge.

\$1,072,500

We will designate 65% of all firstfruits received in this ministry expansion campaign to build a new Early Learning Center.

Our third priority will be to build a new Woodlands Early Learning Center building with 12 classrooms and 10,000 square feet of space. This encompasses the infrastructure needed to make Woodlands Early Learning Center a desired school destination for Christian education in the greater Clermont area. The building will allow for an increase from 110 students to 150 students and 75 school families to 100 school families. Now is the time!



MISSION • VISION • VALUES

Mission

The purpose of why Woodlands is here:
CONNECTING PEOPLE TO JESUS

Vision

What does this mission statement look like at Woodlands?
WORSHIP, LEARN, CONNECT

Values

The values of Woodlands explain why we do what we do.

SEEKING THE “NOT YET”:

Jesus came to seek the lost. Many still do not know Jesus and it is important for us to reach out to those who are not yet Christians and connect them to Jesus who loves them.

Luke 19:10

SHARING GOD’S GIFTS JOYFULLY & GENEROUSLY:

Everything we have has been given by Him generously. Therefore, we follow His example.

Gen. 12:1-3; Is. 42:1, 6-7

SERVING JESUS THROUGH SERVING OTHERS:

Having been saved by Jesus, we are called by Him to serve one another in our spiritual and our physical needs.

Heb. 6:10

THE FAITH OF ALL GENERATIONS MATTERS:

It has been said that the church is just one generation away from extinction. For this reason, Woodlands is committed to making disciples of every generation who can, in turn, make disciples.

Prov. 22; Matt 9:35-38

ONE FAMILY WITH JESUS:

Being connected to Jesus unites us as one family. As a family connected to Jesus, we are united, encouraged, and strengthened by one another.

1 Tim. 3:4; Eph. 6:1-2

EVENT TIMELINE

INFORM PHASE

- APRIL 11, 2024 ■ 11 AM & 6:30 PM - FORUMS IN SANCTUARY
- APRIL 13, 2024 ■ 10 AM - FORUM IN DISCIPLES HALL
- APRIL 14, 2024 ■ 9:45 AM & 12:15 PM - FORUMS IN SANCTUARY
- APRIL 15, 2024 ■ 11 AM - FORUM IN SANCTUARY
- APRIL 16, 2024 ■ 6:30 PM - FORUM IN SANCTUARY
- APRIL 17, 2024 ■ 11 AM & 6:30 PM - FORUMS IN SANCTUARY
- APRIL 27, 2024 ■ 10 AM - PRAYER EVENT EXPERIENCE

INSPIRE PHASE

- APRIL 28, 2024 ■ INSPIRE SUNDAY 1
- MAY 05, 2024 ■ INSPIRE SUNDAY 2
- MAY 12, 2024 ■ INSPIRE SUNDAY 3
- MAY 17, 2024 ■ LEADERSHIP COMMITMENT EVENT
- MAY 19, 2024 ■ INSPIRE SUNDAY 4
- MAY 26, 2024 ■ INSPIRE SUNDAY 5

COMMIT PHASE

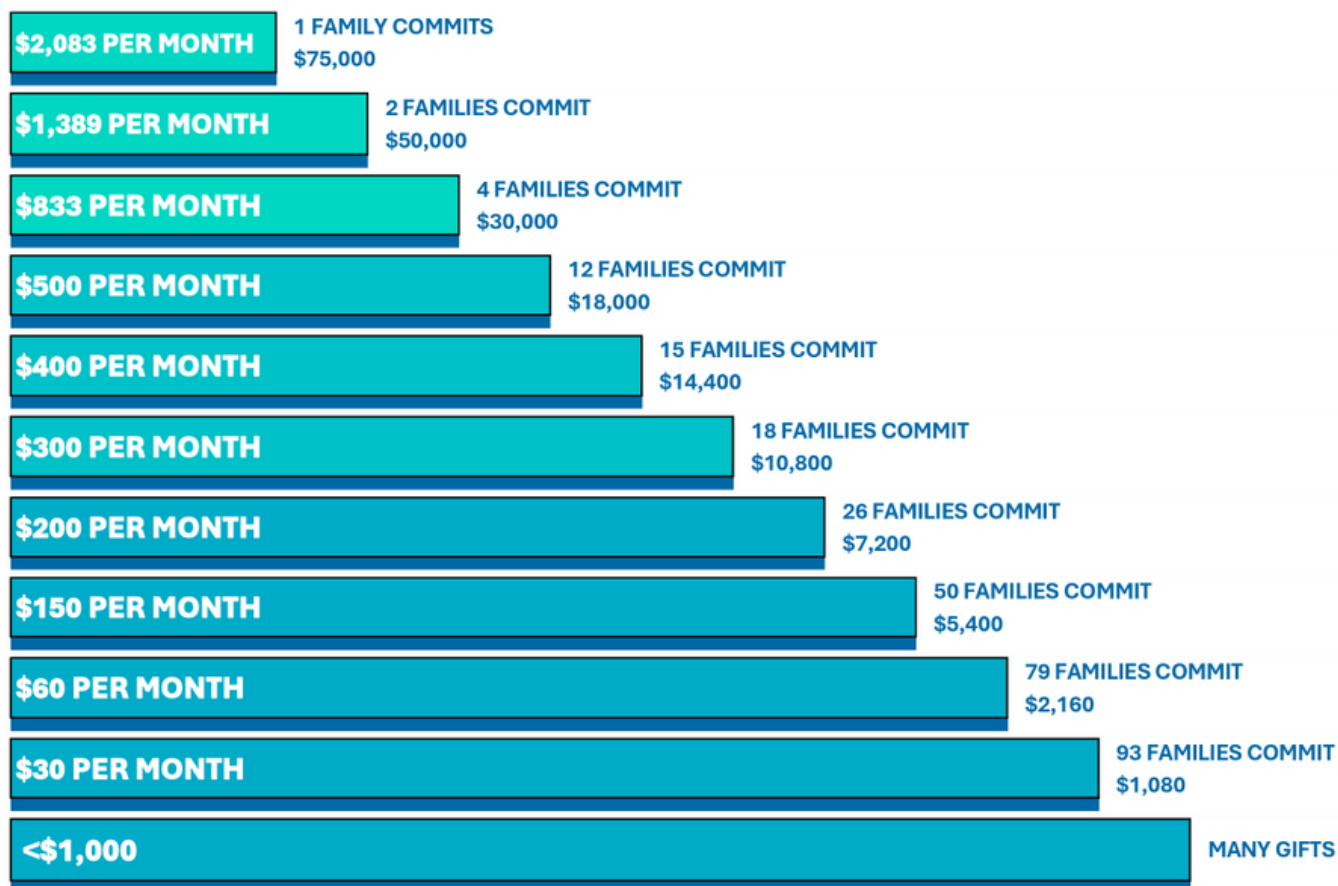
- JUNE 02, 2024 ■ COMMITMENT CELEBRATION SUNDAY

FULFILL PHASE

- JUNE 16, 2024 ■ FIRSTFRUITS



GIVING PYRAMID



- The pyramid above illustrates the gift levels and number of each level needed to reach our goal of **\$1.65 million**.
- *Giving shown is over-and-above your regular giving.*
- Givers at every level are essential and vital.

Not “Equal GIVING”, but “Equal SACRIFICE”

Glory belongs to God . . . he can do infinitely more than we can ask or imagine.

Ephesians 3:20-21

LEADERSHIP TEAM



EXECUTIVE LEADERSHIP TEAM

Pastor Joshua Pettit - Senior Pastor, pastorjosh@woodlandschurch.com

Pastor Bob Roegner - Administrative Pastor, pastorbob@woodlandschurch.com

Campaign Directors - Clinton and Ann Lowe, clintonl@woodlandschurch.com

Campaign Managers - Bill and Denise Price, hilltopper75@hotmail.com

Communications Managers - Bill and Kelley Wood, justinsammie@cfl.rr.com

CONNECTION TEAM

Prayer Coordinators - Larry and Debbie Queen, larrypqueen@yahoo.com

Financial Coordinators - Bryan Hallman, accounting@woodlandschurch.com
Darren Lefebvre, totodjm1@gmail.com

Connection Coordinator - Wayne Varga, wcvjr61@gmail.com

Visitation Leaders - Tom and Dawn Cheyney, chaine62@yahoo.com

Children's/Youth Leader - Betsy Burnham, dce@woodlandchurch.com

School Leaders - Andie Bell, elcdirector@woodlandschurch.com
Sherry Ley, sherry@woodlandschurch.com

Community Leader - Myrna Mojica, myrnamojica4@gmail.com

Hospitality Coordinator - Jaime Barney, jaimie41385@yahoo.com

CHURCH AND SCHOOL STAFF

Amy Roegner - ELC School Secretary/WLC Communications, elcoffice@woodlandschurch.com

Kristi Roegner - WLC Church Secretary, office@woodlandschurch.com

OUR FUTURE MINISTRY

CONNECTING CHILDREN AND FAMILIES TO JESUS

Expanding Spiritual Opportunities for . . .

. . . YOUTH

Our church youth group will have a dedicated space within our renovated Disciples Hall to call their own. They will know they are a priority to our congregation and valued as members of our church family. Our prayer is that the new youth room will be a place teens feel loved as they enjoy more space to spiritually grow and learn.

We want to see our youth thrive as they become the young Christian men and women God created them to be.

. . . EDUCATION

The Woodlands ELC believes that each student is uniquely created by God. Their early development, both spiritual and academic, is carefully cultivated through a curriculum which promotes student creativity and growth socially, physically and emotionally. The additional classrooms will be put to effective use to satisfy our growing waitlist. This added space will provide flexibility for daily, weekly, and annual programs to include Vacation Bible School, Sunday school, pre-school, and adult Bible studies.

. . . OUTREACH

Currently, WLC has very limited conference room space. Our new ELC and Disciples Hall renovation will provide us the space needed for small meetings, as well as large church events. With more meeting space on our campus, we will be able to expand our outreach ministry as we look beyond ourselves to further connect people to Jesus. We will be able to better address their needs, invite them into fellowship, and help them experience the love of Jesus.



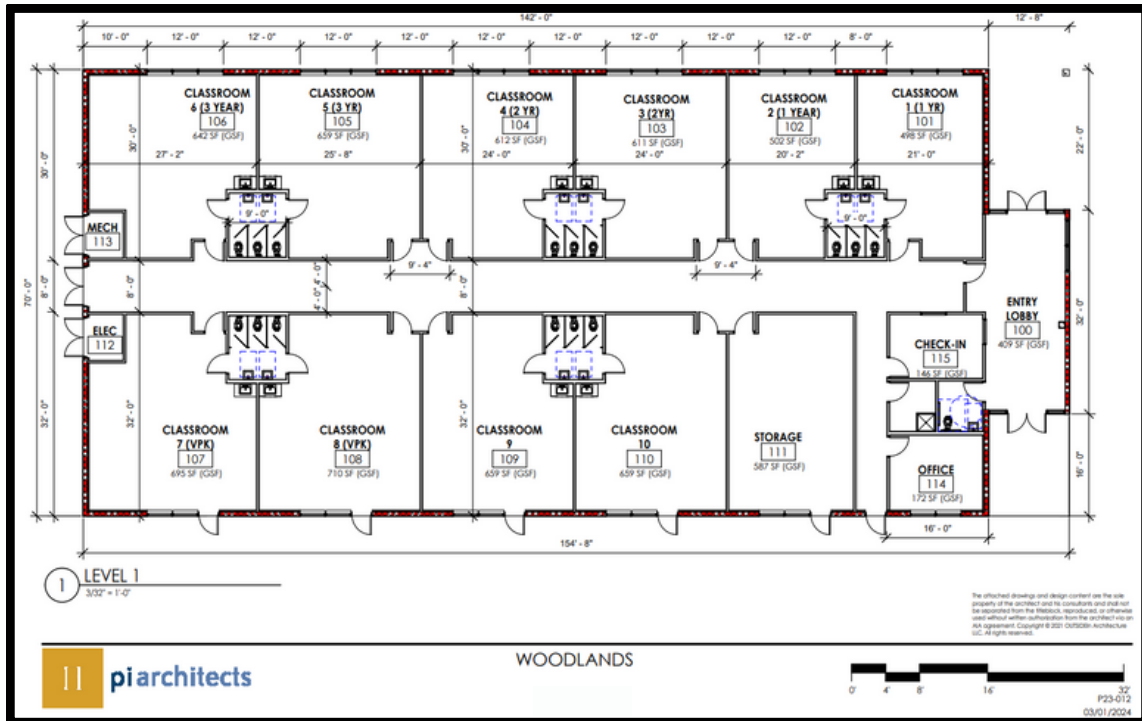
“Let the little children come to me and do not hinder them, for the kingdom of God belongs to such as these.”

Luke 18:16

NEW SCHOOL BUILDING



FRONT OF SCHOOL BUILDING



FLOOR PLAN FOR THE NEW SCHOOL BUILDING



Heavenly Father,

We pray that we are honoring you with this project, with our gifts, and with all of our ministries at Woodlands. We thank you for all who gave in the past to give us this place to do your work. Please bless your church, all those working to fulfill your great commission, and all the future families that will be blessed in these spaces. We pray all of this in the name of the Father, the Son, and the Holy Spirit. Amen.

Woodlands Lutheran Church
15333 CR 455, Montverde, FL 34756
407.469.2525
office@woodlandschurch.com
www.woodlandschurch.com



LOOK WHAT GOD IS DOING